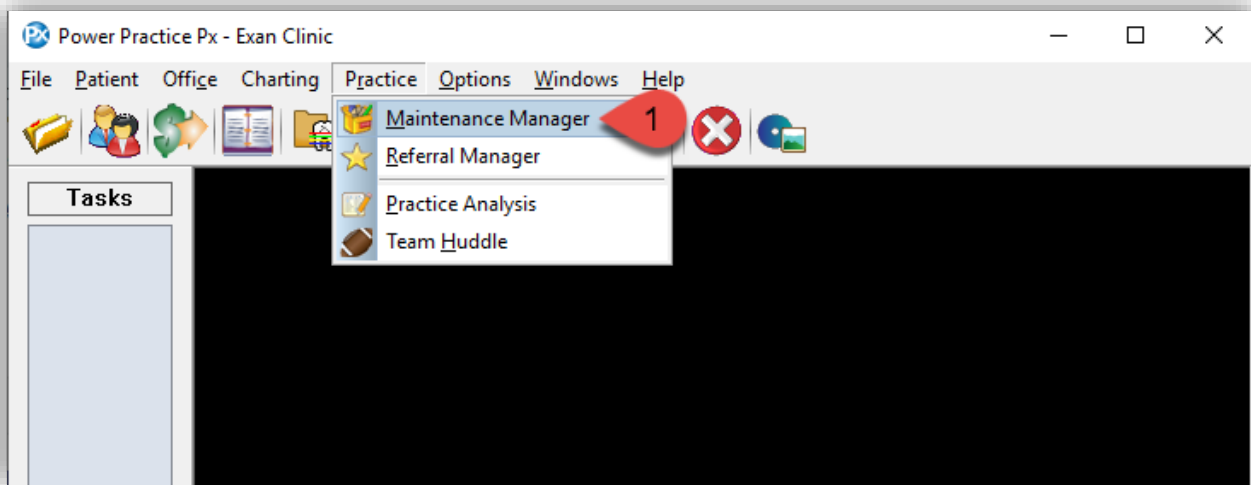
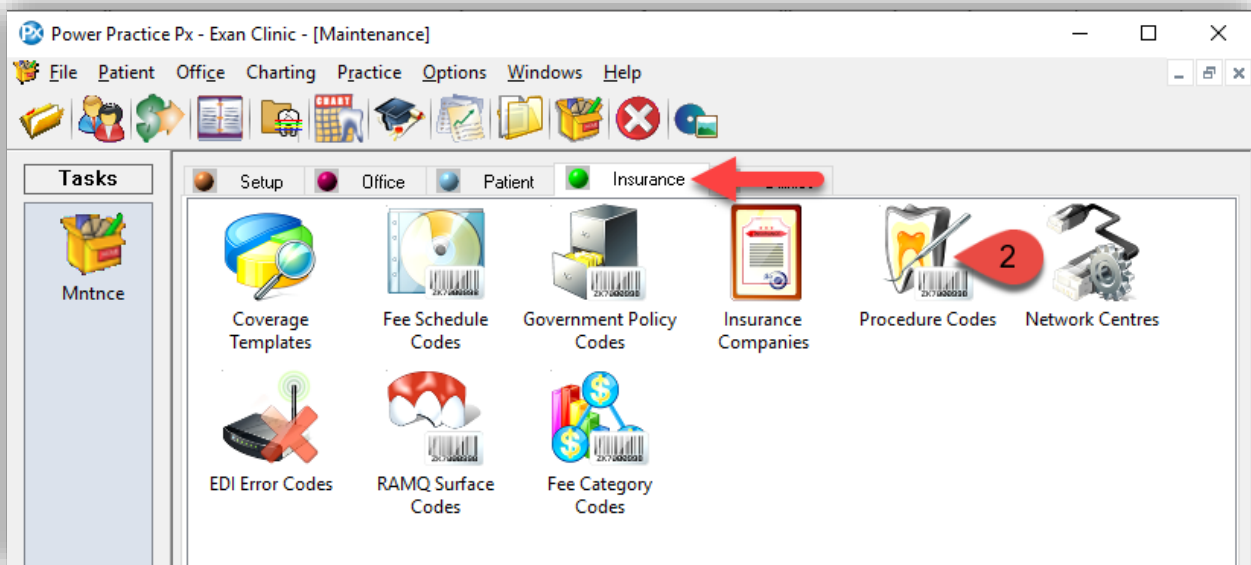


How to Add New Procedure Codes

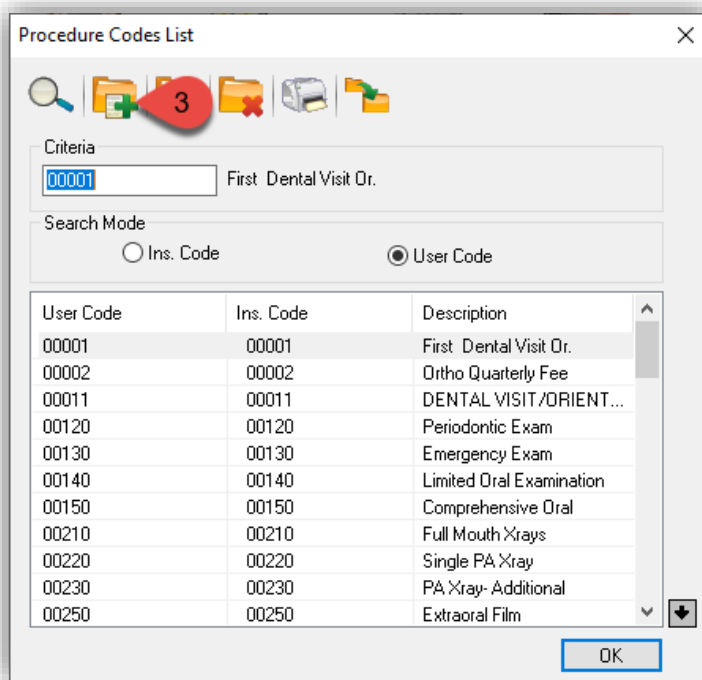
1. At the top of Power Practice, click on **Practice** then **Maintenance Manager**.



2. Under **Insurance Tab**, click on **Procedure Codes**.



- Click on **Create a New Record** icon.



Procedure Codes List

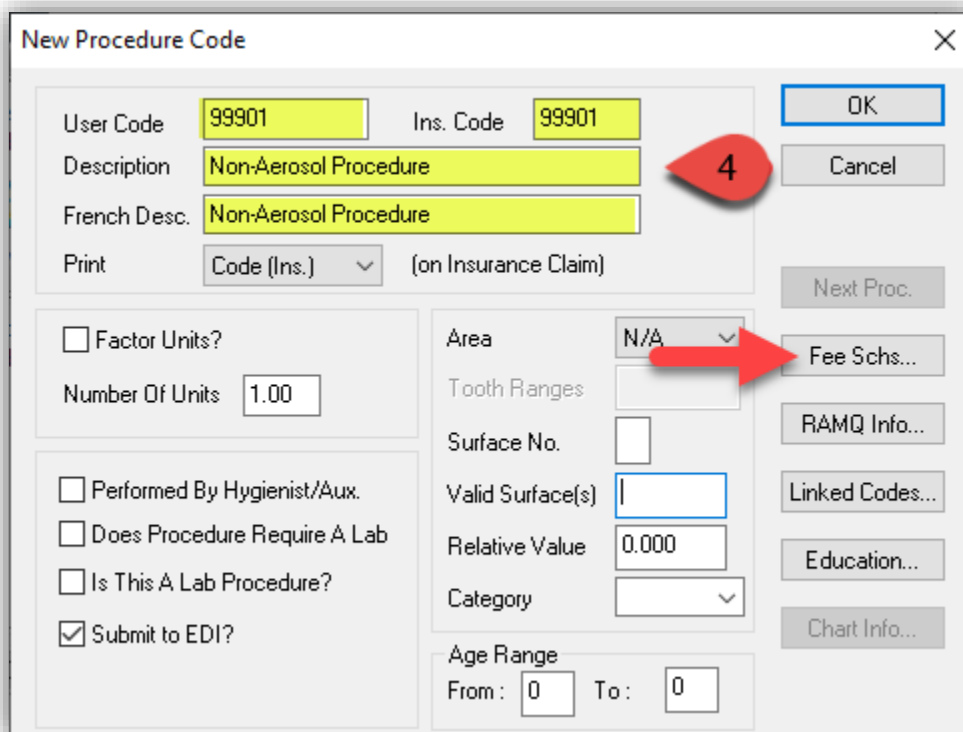
Criteria
00001 First Dental Visit Or.

Search Mode
☐ Ins. Code ☒ User Code

User Code	Ins. Code	Description
00001	00001	First Dental Visit Or.
00002	00002	Ortho Quarterly Fee
00011	00011	DENTAL VISIT/ORIENT...
00120	00120	Periodontic Exam
00130	00130	Emergency Exam
00140	00140	Limited Oral Examination
00150	00150	Comprehensive Oral
00210	00210	Full Mouth Xrays
00220	00220	Single PA Xray
00230	00230	PA Xray- Additional
00250	00250	Extraoral Film

OK

- Please Fill in **New Procedure Code information** (User Code, Ins. Code, Description & French Desc.) and then click on **Fee Schs....**



New Procedure Code

User Code 99901 Ins. Code 99901

Description Non-Aerosol Procedure

French Desc. Non-Aerosol Procedure

Print Code (Ins.) (on Insurance Claim)

☐ Factor Units?

Number Of Units 1.00

☐ Performed By Hygienist/Aux.

☐ Does Procedure Require A Lab

☐ Is This A Lab Procedure?

☒ Submit to EDI?

Area N/A

Tooth Ranges

Surface No.

Valid Surface(s)

Relative Value 0.000

Category

Age Range
From: 0 To: 0

OK

Cancel

Next Proc.

Fee Schs...

RAMQ Info...

Linked Codes...

Education...

Chart Info...

5. Within Fee Schedules and Amounts, under Sch column please add a **R** (this may differ base on the fee schedule your office use, for example: O) and **enter corresponding Amount**.

Sch	Amount
R	\$10.00
	\$0.00
	\$0.00
	\$0.00
	\$0.00
	\$0.00
	\$0.00
	\$0.00
	\$0.00
	\$0.00
	\$0.00
	\$0.00
	\$0.00
	\$0.00

Click OK to save and exit.

Please repeat steps to add next procedure code you wish to add.