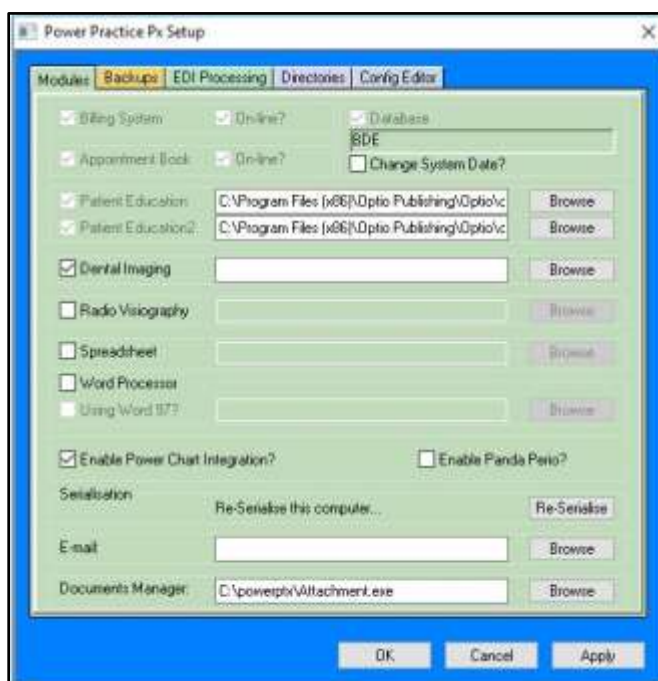


## Linking Kodak Trophy to Power Practice

Make sure you are logged out of Power Practice.

- On each workstation, locate the ppsetup.exe in the local powerptx directory and run it. This will open the Power Practice setup screen.



- Select the Dental Imaging check box and click the **Browse** button.
- Navigate to the **C:\tw\** directory and find the **tw.exe** file, highlight it and click **Open**.
- Click **Apply** then click **Ok** button to exit the setup screen.

Once you have exited from the Setup program, go into Power Practice Pro and from the main screen,

- Click **Options** and select **Desktop**.

- Click the **Setup** button. Scroll down the list of **Available** buttons looking for one that looks like a little picture on a disc (see below), highlight that one and click the **Add>>** button. Once it has been added to the **Current** list, click the **Ok** button to exit.

