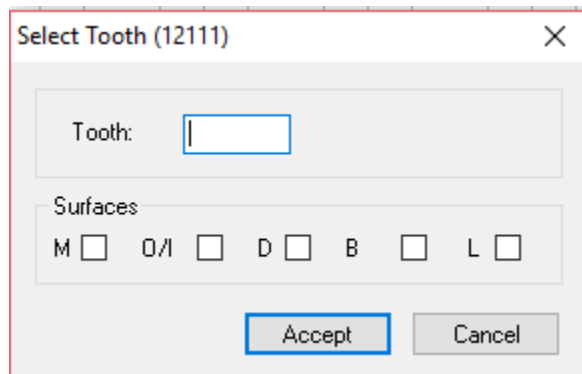


New Fluoride Codes in Power Charts Requiring Tooth Number

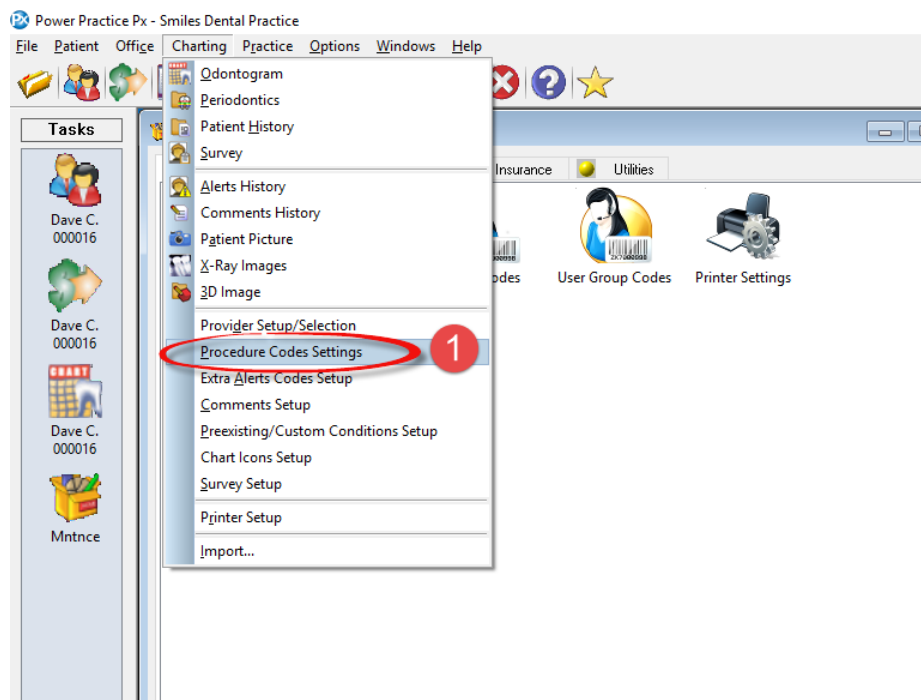
Issue Description:

When posting the new fluoride codes (12111-12114) in Power Chart, you may see this popup incorrectly asking for a tooth to be entered.

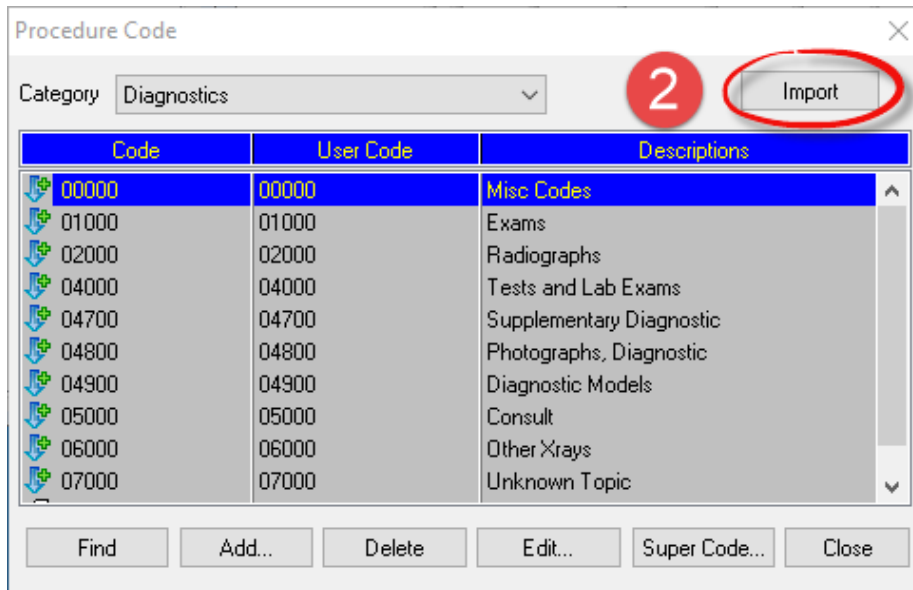


To fix the new fluoride codes in Power Chart please follow the steps below:

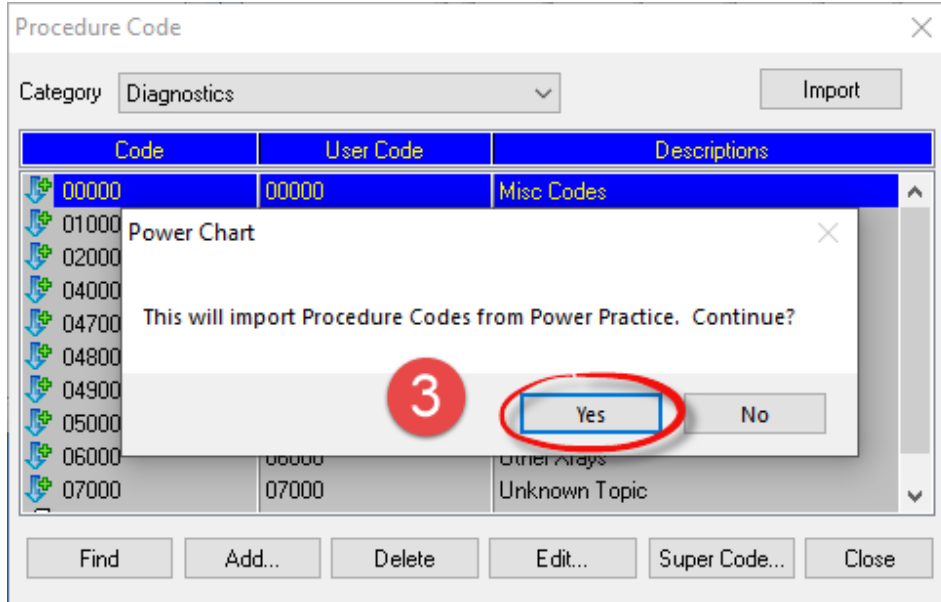
1. At the top of Power Practice click on **Charting** then **Procedure Code Settings**.



2. Click on the **Import** button.



3. You will see a popup message "This will import Procedure Codes from Power Practice. Continue?", click the **Yes** button.



Power Chart has now been updated with the new Fluoride codes and no further action is required on your part.