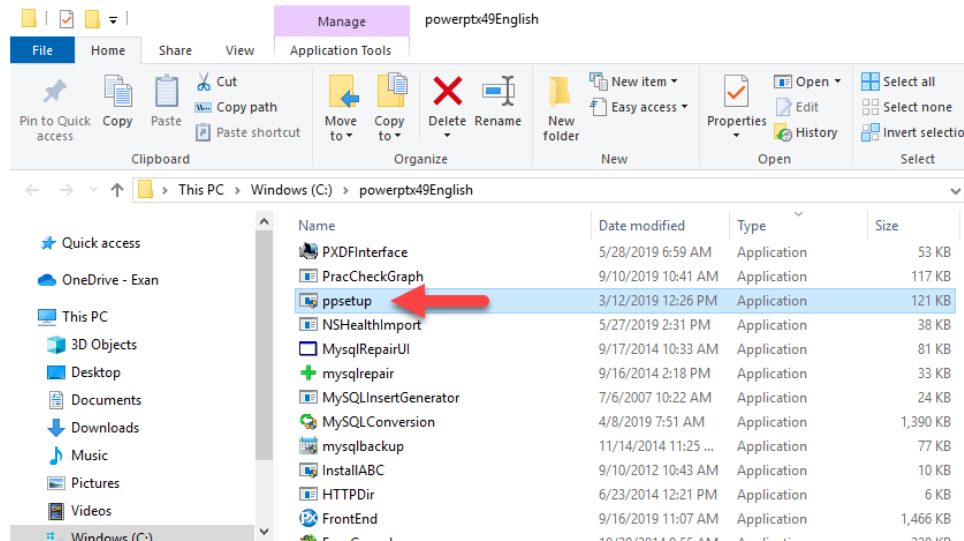


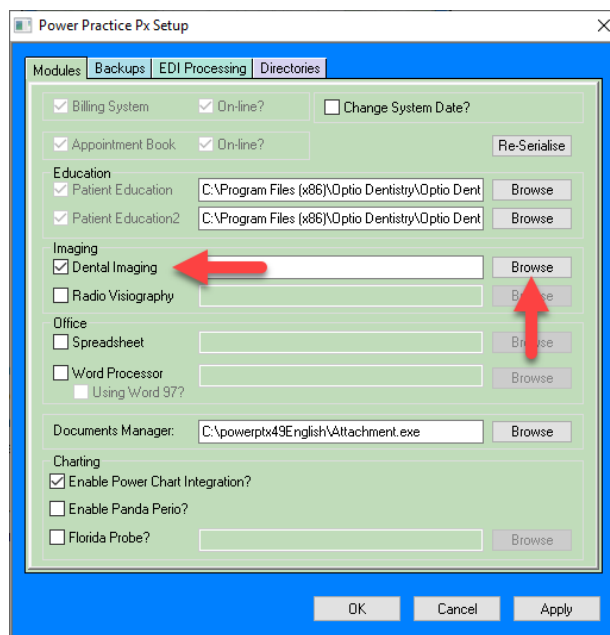
Standard Bridging Instructions

Please make sure Power Practice is closed.

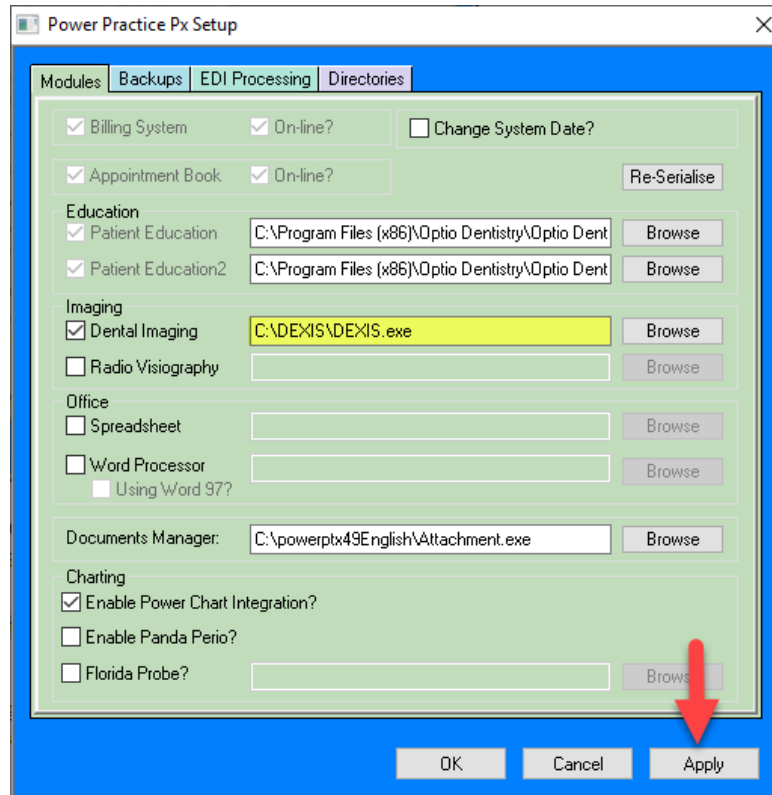
1. On each workstation, locate the **ppsetup.exe** in the local powerptx directory and run it. This will open the Power Practice setup screen.



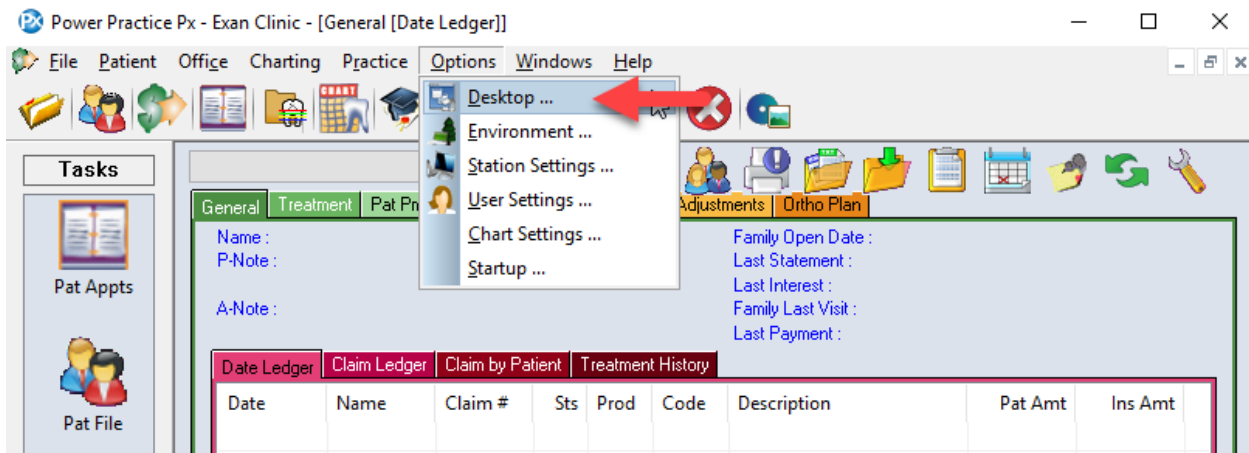
2. Select the **Dental Imaging** check box and click the **Browse** button.



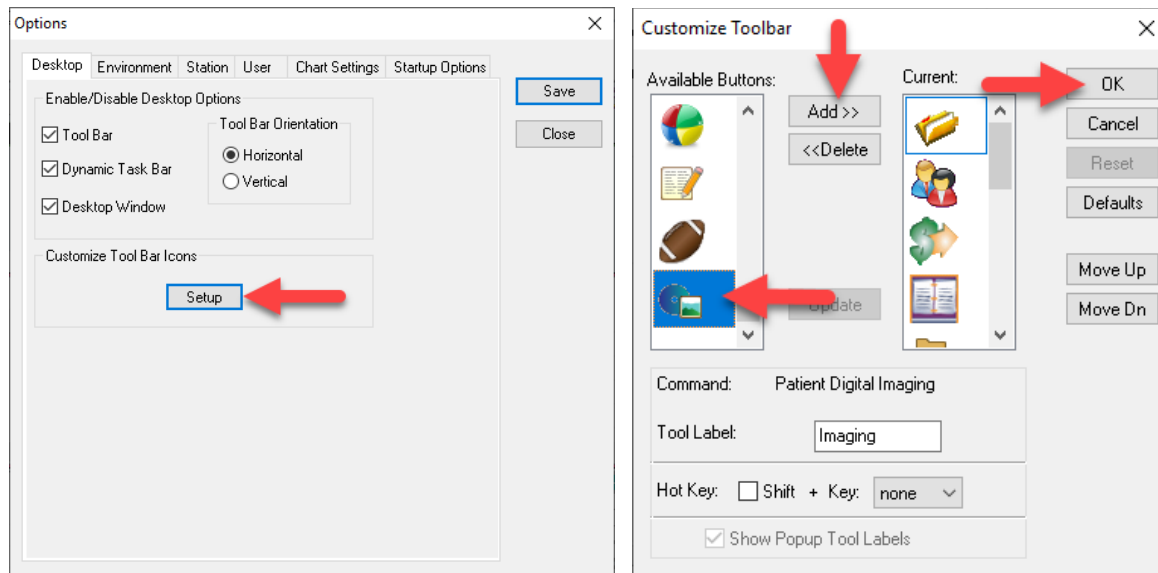
3. Navigate to **imaging software executable**. (For example: C:\DEXIS\DEXIS.EXE)
4. Click **Apply** and **OK** to close out.



You may need to add the Imaging icon to the Power Practice Desktop. Once you have exited from the Setup program, go into Power Practice and from the main screen, select **Options** and select **Desktop**.



- Click the **Setup** button. Scroll down the list of **Available** buttons looking for one that looks like a little picture on a disc (see below), highlight that one and click the **Add>>** button. Once it has been added to the **Current** list, click the **Ok** button to exit.



You should now have a new icon in the top right corner of your icon list in Power Practice. To test the connection, you will need to bring up a patient then click on the icon you just added.

